

Documentation Power supply

**Three-phase AC/DC power supply
24 VDC**

Art.no: **52 481 16**

Non stabilized, smoothed AC/DC power supply for 24VDC

Primary voltage: 3x380-400 VAC

Frequency: 50-60 Hz

Secondary voltage: No load 27 VDC
80% load 24 VDC

Secondary current: 25 A

Ripple level: 1,2% (0,55VPP)

ta: 40°C (maximum ambient temperature)

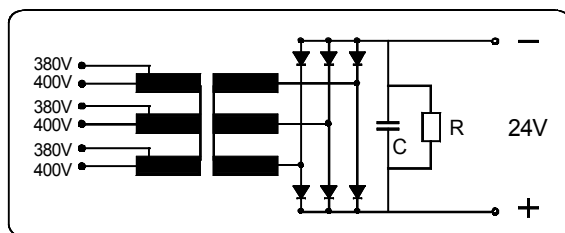
Losses: Po 20 W , PI 80 W

Used components are UL-approved

Standards: EN 61558-2-6, EN 50081-2, EN 50082-2

Type:
TLOTK-25

Connecting diagram



Manufactured by TRAMO-ETV AB , SE-241 92 ESLÖV

