

Documentation Power supply

Three-phase AC/DC power supply 24 VDC

Art.no: **52 481 18**

Non stabilized, smoothed AC/DC power supply for 24VDC

Primary voltage: 3x380-400 VAC

Frequency: 50-60 Hz

Secondary voltage: No load 27 VDC
80% load 24 VDC

Secondary current: 40 A

Ripple level: 1,2% (0,55VPP)

ta: 40°C (maximum ambient temperature)

Losses: Po 27 W , PI 125 W

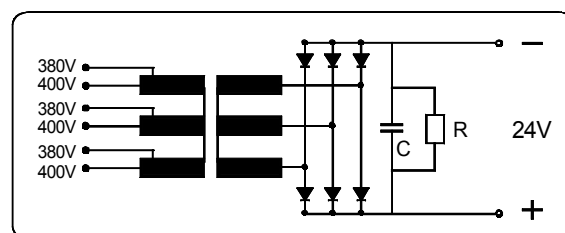
Used components are UL-approved

Standards: EN 61558-2-6, EN 50081-2, EN 50082-2

Type:

TLOTK-40

Connecting diagram



Manufactured by TRAMO-ETV AB , SE-241 92 ESLÖV

A: 245 mm
B: 240 mm
B1: 30 mm
C: 260 mm
D: 232 mm
E: 160 mm
F: 200 mm

Weight: 19,0 kg

